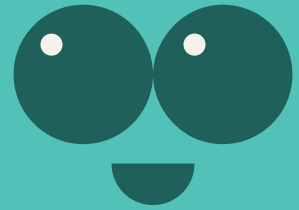


# Pond Spice

Scientific name : *Litsea glutinosa*



English name : Pond Spice

Family : Lauraceae

Native Distribution : Native species

Origin : Guangdong, Guangxi, Yunnan, Hainan, and Fujian provinces.

Growth habits : Evergreen trees

**Leaf :** The leaf shape varies greatly, ranging from inverted-ovate to elliptic-lanceolate, with a wedge-shaped base. The texture is leathery to thin-leathery, and the leaves are arranged alternately. Both sides are covered with fine hairs when young, but only the midrib on the upper surface retains some fine hairs when they are mature.

**Flower :** Both the flower stalk and the inflorescence stalk are covered with gray-yellowish hairs.

**Fruit :** The drupe is spherical, turning dark brown to black when ripe.

**Tree characteristics :** It can grow up to 15 meters tall. The main trunk has gray to gray-brown bark. The small branches are gray-brown, with gray-yellowish hairs when young.

**Flowering period :** May to June

**Fruit period :** September to October

**Ecology :** Common native plant in Hong Kong, often found growing at forest edges, stream banks, and shrubbery. The Chinese banyan also serves as a host plant for the Common Jay, the Blue Spotted Crow, and the Common Sailor butterflies.