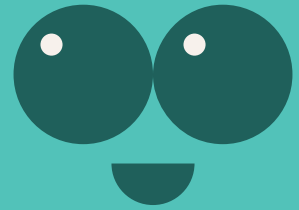


# Shortleaf Lilyturf

Scientific name : *Ophiopogon japonicus*



English name : Shortleaf Lilyturf

Family : Liliaceae

Native Distribution : Invasive Species

Origin : Southeast Asia

Growth habits : Herbaceous plant

Leaf : Single, clustered, leaf base acute, leaf tip blunt, leaf margin rough, dark green, both leaf surfaces smooth, powdery on the lower surface.

Flower : Flower stem erect, pale purple to white.

Fruit : Capsule, seeds dark blue

Tree characteristics : With a rhizome, extensive root system, roots can reach over 20 cm.

Flowering period : Summer

Fruit period : Autumn

Ecology : Gardens' ground cover, border planting, bonsai, miniature foliage potted plants