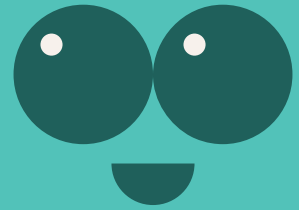


Striped Bracketplant

Scientific name : *Chlorophytum bichetii*



English name : Striped Bracketplant

Family : Liliaceae

Native Distribution : Invasive species

Origin : Tropical Africa

Growth habits : Herbaceous plant with variegated leaves

Leaf : Single, linear-shaped, papery, naturally drooping, green in color, with white or pale yellow line-like markings along the edges, resembling a border.

Flower : Small white flowers, with short flower stalks, often concealed at the base of the leaf cluster.

Fruit : Black capsule fruits, triangularly flattened and spherical in shape.

Tree characteristics : Prefers a warm and humid environment, with the optimal temperature range for growth being 20-28°C. It is a semi-shade plant, enjoying bright but indirect light. If exposed to intense sunlight, the leaves may get sunburned and lose their luster.

Flowering period : October to March

Ecology : It is highly suitable for pot cultivation or hanging plants, and is a common indoor foliage plant.