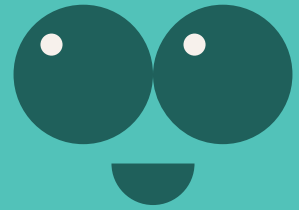


Chinese Hackberry

Scientific name : *Celtis sinensis Pers*



English name : Chinese Hackberry

Family : Ulmaceae

Native Distribution : Native species

Origin : Central China, South China, East China and all provinces in southwest China.

Growth habits : Fallen trees

Leaf : Ovate to elliptic-ovate, thin papery, green on both sides. Leaf base is rounded. The distinct basal tri-veins are visible on the leaf underside. Leaf petiole is grooved on the upper surface. Deciduous in winter, turning yellow before leaf fall.

Flower : Light yellow to light green small flowers.

Fruit : The fruit is nearly spherical, reddish-brown when ripe.

Tree characteristics : Can reach a height of 10 meters, with grayish bark on the main trunk.

Flowering period : March to May

Fruit period : September to October

Ecology : Pushu is a common native tree species in Hong Kong. It is often found along roadsides, in sparse forests, and on hillsides. It is also one of the species found in local feng shui forests. Pushu serves as the host plant for some butterflies, including the black-veined butterfly, Zhufei sing butterfly, and mango butterfly. The fruit also serves as food for some birds.