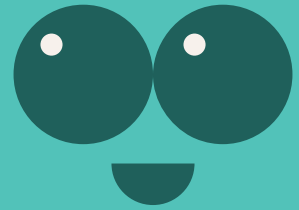


Red Flowered Loropetalum



Scientific name : *Loropetalum chinense var. rubrum*



English name : Red Flowered Loropetalum

Family : Hamamelidaceae

Native Distribution : Invasive species

Origin : LiuYang, Hunan, and Ningdu areas.

Growth habits : Evergreen shrub / small tree

Leaf : Opposite, thin leathery, broadly ovate to ovate to elliptic, leaf apex short acuminate to blunt.

Flower : Purple-red flowers, each about 3mm long.

Fruit : Icyindrical, black-brown when ripe, does not split, shaped like a sausage.

Tree characteristics : Strong adaptability, tolerant of both drought and cold temperatures.

Flowering period : April to May

Ecology : The Red Flowered Loropetalum exhibits strong resistance to diseases and pests. It attracts Fulgorid planthoppers, longhorn beetles, and brown longhorn beetles as food sources.