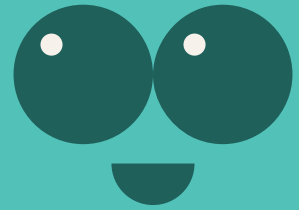


Orange-jessamine

Scientific name : *Murraya paniculata*



English name : Orange-jessamine

Family : Rutaceae

Native Distribution : invasive species

Origin : Yunnan, Guizhou, Hunan, Guangdong, Guangxi, Fujian, Taiwan, Hainan, and other tropical and subtropical regions in Asia.

Growth habits : Evergreen shrub

Leaf : Small leaflets in inverted-ovate or diamond-shaped

Flower : White, approximately 4 cm in diameter.

Fruit : Fruits have a fragrant aroma, bitter and pungent taste, with a numbing sensation on the tongue.

Tree characteristics : Orange-jessamine thrives in warm environments, with the most suitable temperature range for growth being 20-32°C, but it is not tolerant to cold temperatures.

Flowering period : May to August

Fruit period : October to February

Ecology : Commonly used as decorative plants around buildings or cultivated as potted foliage plants to enhance indoor ambiance. It is also frequently used as a seasoning ingredient in cooking.