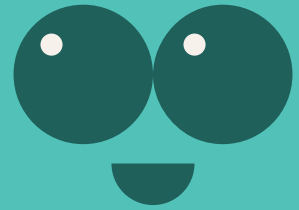


Golden-shower

Scientific name : *Cassia fistula*



English name : Golden-shower

Family : Caesalpinioideae

Native Distribution : Invasive species

Origin : India, Myanmar, and Sri Lanka.

Growth habits : Deciduous trees

Leaf : Opposite, thin leathery, broadly ovate to ovate to elliptic, leaf apex short acuminate to blunt.

Flower : Yellow in color. Five petals.

Fruit : Icyindrical, black-brown when ripe, does not split, shaped like a sausage.

Tree characteristics : It can grow up to 15 meters in height. The trunk has smooth, gray bark when young, and rough, dark brown bark when old.

Flowering period : May to August

Fruit period : October

Ecology : Golden-shower, also known as the *Kigelia africana*, is a common street tree and ornamental plant. During the flowering season, it looks like it's immersed in a sea of flowers. The flowers on the inflorescence transition from creamy yellow to bright yellow, creating a striking and visually appealing display. The flowers cascade downward, resembling a "flower waterfall." This species is widely planted in southern China, southwestern China, and Southeast Asia.