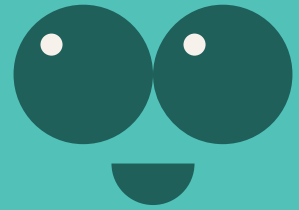


# Chinese Fan-palm

Scientific name : *Livistona chinensis*



English name : Chinese Fan-palm

Family : Arecaceae

Native Distribution : Invasive species

Origin : Southern China, Vietnam, and southern Japan.

Growth habits : Tree-like palm

Leaf : Deeply lobed in a palmate shape, ranging from circular to nearly circular.

Flower : White to yellow in color and have a firework-like shape.

Fruit : Turn a dark blue-black color when mature, resembling olives in shape.

Tree characteristics : They can grow up to 20 meters in height and are found in tree forests growing in sandy coastal soil.

Flowering period : March to April

Fruit period : May to July

Ecology : Serve as habitats for the short-nosed fruit bat, often seen resting under the leaves of the Pandanus tree. Pandanus leaves can also be used to make Pandan fans.