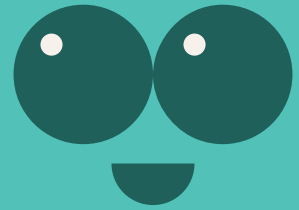


Tuberous Sword Fern

Scientific name : *Nephrolepis cordifolia*



English name : Tuberous Sword Fern

Family : Nephrolepidaceae

Native Distribution : Native species

Origin : Tropical Asia, Africa.

Growth habits : Herbaceous plant

Leaf : When young, densely covered with reddish-brown hair-like scales, scales with smooth edges.

Flower : Purple-red flowers, each about 3mm long.

Fruit : Icyindrical, black-brown when ripe, does not split, shaped like a sausage.

Tree characteristics : Prefers warm and humid environments but is not tolerant to high light intensity.

Ecology : It serves as excellent floral material. Additionally, it is an important water collection plant, capable of replenishing water in the wild.