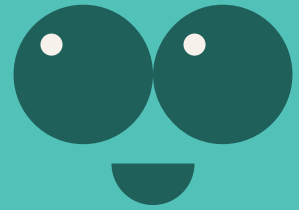


# Scandent Scheffera

Scientific name : *Schefflera arboricola* Hayata



English name : Scandent Scheffera / Umbrella Tree

Family : Araliaceae

Native Distribution : Invasive Species

Origin : Tropical and subtropical regions, Taiwan foothills, Hainan Island, Guangdong and Guangxi.

Growth habits : Climbing shrub

Leaf : Palmate compound leaves, alternate, both surfaces smooth and hairless, leathery, yellowish-green.

Flower : Small, pale yellow or yellowish-green

Fruit : Spherical, with glandular spots when young, reddish-yellow when mature.

Tree characteristics : Bright green in full sun, deeper green in low light.

Flowering period : Autumn

Ecology : Can be used as an indoor potted plant or medicinal uses, with pain-relieving, blood-circulating, and swelling-reducing effects.