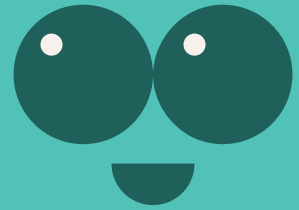


Pummelo

Scientific name : *Citrus grandis*



English name : Pummelo

Family : Rutaceae

Native Distribution : Invasive species

Origin : Southeast Asia, various regions south of the Yangtze River in China, around the areas of Xinyang and Nanyang in Henan Province.

Growth habits : Evergreen trees

Leaf : The young leaves are usually dark purple-red, thick in texture, with a deep green color, and broadly ovate or elliptical in shape.

Flower : The flower buds are light purple-red, the petals are milky white, and the sepals are irregular in shape.

Fruit : The pomelo is spherical, oblate, pear-shaped, or broadly conical in shape.

Tree characteristics : Prefer warm and humid climates; not tolerant of drought and waterlogging and require a large amount of water. They are deep-rooted plants and require deep soil.

Flowering period : April to May

Fruit period : September to December

Ecology : Pomelo has medicinal and economic value. It is harvested around the Mid-Autumn Festival and is considered a seasonal fruit for the festival.