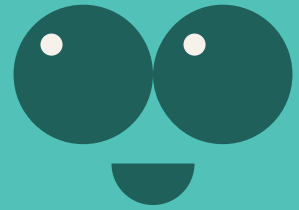


Wampi / Wampee

Scientific name : *Clausena lansium*



English name : Wampi/ Wampee

Family : Rutaceae

Native Distribution : Invasive species

Origin : Distributed in southern Chinese provinces, such as Yunnan and Fujian.

Growth habits : Evergreen small trees

Leaf : The leaflets are odd-pinnate compound leaves, with 5-11 pairs of leaflets, alternate, and ovate or ovoid-elliptic in shape. The leaf surface has glandular dots widely scattered on the surface, releasing a curry-like odor when crushed.

Flower : The petals of the pomelo flower are white and covered with fine hairs.

Fruit : Oval or broadly oval in shape, initially with scattered oil glands. The fruits are a pale yellow to dark yellow color.

Tree characteristics : Good tolerance to various types of soil, but it prefers well-draining and fertile soil.

Flowering period : April to May

Fruit period : July to August

Ecology : Involves a variety of cooking methods, including peeling and eating raw, squeezing juice, processing fruit sauce and natural raw sun dried yellow skin.