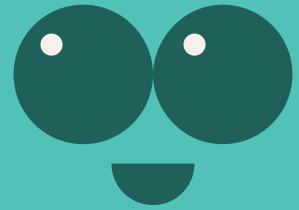


Frangipani

Scientific name : *Plumeria rubra*



English name : Frangipani

Family : Apocynaceae

Native Distribution : Invasive species

Origin : Mexico to Central America

Growth habits : Deciduous tree

Leaf : Long oval inverted conical shape, leaf tip gradually pointed to acute, thick paper quality.

Flower : The corolla is funnel-shaped, often seen in white or peach pink.

Fruit : Cylindrical, gradually pointed towards the end, green, turning black when mature.

Tree characteristics : It can grow up to 8 meters in height. The main trunk has smooth bark, ranging from light green to gray-green. The branches are stout, fleshy, rich in latex, and have obvious leaf scars on the surface.

Flowering period : March to September

Fruit period : May to October

Ecology : Due to its graceful tree shape, beautiful and fragrant flowers, as well as its tropical charm, it is widely planted in tropical and subtropical regions as ornamental plants and roadside trees. It is also very common in Hong Kong.