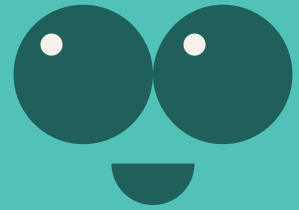


# Rose Apple / Malabar Plum

Scientific name : *Syzygium jambos*



English name : Rose Apple/ Malabar Plum

Family : Myrtaceae

Native Distribution : Invasive species

Origin : Southeast Asia and southern China.

Growth habits : Evergreen tree

Leaf : The leaves are leathery, lanceolate to elliptic, with numerous small transparent glandular dots on both sides. The lower side of the leaves has raised secondary veins and prominent reticular veins.

Flower : The petals are greenish-white, broadly ovate, and soft-hairy in a ball-like cluster.

Fruit : Spherical, with oil glands, turning light yellow when ripe. The flesh of the fruit is fleshy and fragrant, containing 1 to 2 seeds.

Tree characteristics : It can grow up to 10 meters in height. The trunk has brown bark.

Flowering period : March to April

Fruit period : May to June

Ecology : Although the Chinese tallow tree is an alien species, it has become naturalized locally and is commonly found in feng shui forests and village outskirts. The Chinese tallow tree also provides food and habitat for local animals, benefiting the biodiversity of urban trees. However, the Chinese tallow tree is considered an invasive species in parts of southern Africa, Australia, and some islands in the Pacific, which is detrimental to the native plant communities in those areas.