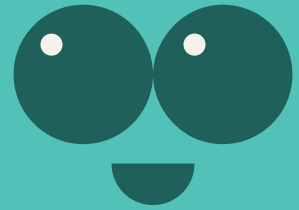


# Ivy Tree

Scientific name : *Schefflera heptaphylla*



English name : Ivy Tree

Family : Araliaceae

Native Distribution : Native species

Origin : It is found in various provinces in southern to western China.

Growth habits : Evergreen tree or shrub

Leaf : Its leaves are palmately compound, with a shape resembling a hand. The texture can range from papery to leathery. When young, they often have serrated edges or are lobed.

Flower : Small and fragrant, with white petals.

Fruit : spherical drupe in shape, turning black when ripe.

Tree characteristics : It can grow up to 10 meters in height. The main trunk has a smooth gray-brown bark, and the tree has a broad crown. The twigs are stout.

Flowering period : August to September

Fruit period : December to February

Ecology : It is a common species in tropical and subtropical evergreen broad-leaved forests, and is also a very common native plant in Hong Kong. Due to its flowering and fruiting season in autumn and winter, it serves as a good source of nectar for wildlife, helping them survive the winter. The nectar of the goosefoot tree can also be made into delicious honey.